

Specifications	
Printing system	Piezoelectric inkjet system
Print resolution	720 x 720 dpi 6 gradations per dot (5 dot sizes + no dot (White)) 1,440 x 1,440 dpi 4 gradations per dot (3 dot sizes + no dot (White))
Print size	Roll paper Paper widths: 89, 102, 127, 152, 203, 254, 279, 305 mm (3.5", 4", 5", 6", 8", 10", 11", 12") Paper advance lengths: 88.9 (3.5") to 1,757.7 mm (69.2")
Maximum print size	Roll paper: 305 x 1,757.7mm (12" x 69.2")
Paper types <sup>*1</sup>	Roll paper Noritsu proprietary inkjet photo paper Glossy Widths: 102, 127, 152, 203, 254, 305 mm (4", 5", 6", 8", 10", 12") Length: 100 m (328 feet) Semi-glossy Widths: 102, 127, 152, 203, 254, 305 mm (4", 5", 6", 8", 10", 12") Length: 100 m (328 feet) Pearlescent Widths: 203, 254, 305 mm (8", 10", 12") Length: 50 m (164 feet)
Ink	4 colors of dye ink: Y (Yellow), M (Magenta), C (Cyan), BK (Black) Volume: 500 ml per color
Dimensions	See "External view" below
Weight	•Main body: Approx. 119.6kg (263.7 lbs) (excluding options, paper and ink cartridges) •With the paper magazine and print sorter unit: Approx. 151.8kg (334.7 lbs) (excluding options, paper and ink cartridges)
Power specifications	AC 100-120V / 200-240V 1P2W
Rated power capacity	1,000VA or less

\*1 Paper types are subject to change without notice.

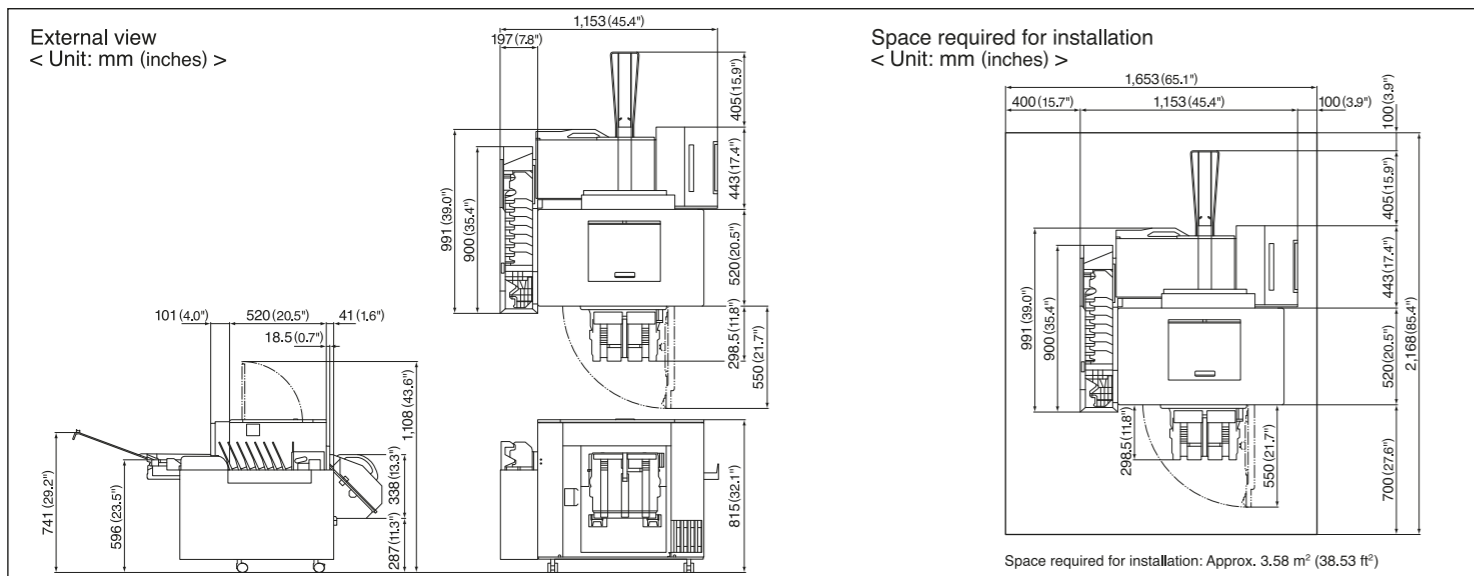
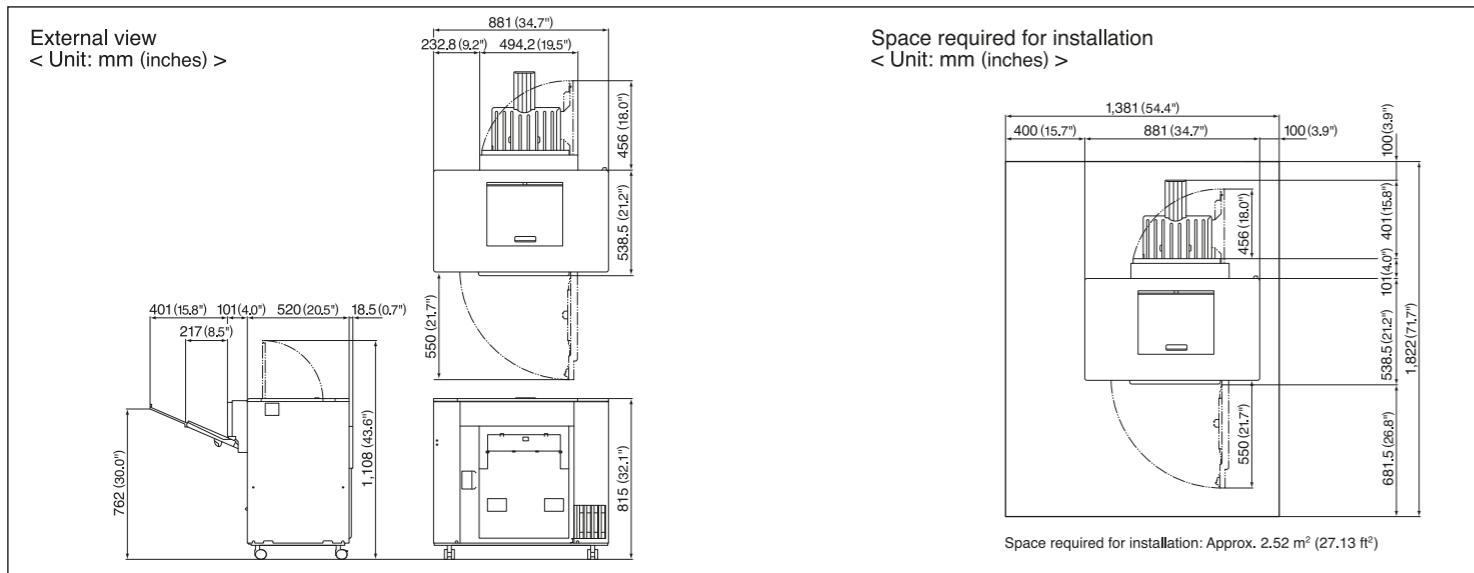
Print capacity for roll paper (prints/hour) <sup>*2</sup>		
Print size (Width x Advance length)	Print resolution: 720 dpi Prints/hour (Approx.)	Print resolution: 1,440 dpi Prints/hour (Approx.)
127 x 89 mm (5" x 3.5")	770	261
152 x 102 mm (6" x 4")	670	217
89 x 89 mm (3.5" x 3.5")	860	293
89 x 127 mm (3.5" x 5")	635	209
102 x 152 mm (4" x 6")	525	169
127 x 178 mm (5" x 7")	440	135
203 x 102 mm (8" x 4")	590	188
203 x 254 mm (8" x 10")	260	79
203 x 305 mm (8" x 12")	220	65
254 x 203 mm (10" x 8")	285	88
254 x 305 mm (10" x 12")	195	58
305 x 203 mm (12" x 8")	260	80
305 x 254 mm (12" x 10")	210	63
305 x 457 mm (12" x 18")	120	36
305 x 610 mm (12" x 24")	90	27
305 x 914 mm (12" x 36")	61	18
305 x 1,757.7 mm (12" x 69.2")	32	9

\*2 Using Noritsu proprietary inkjet paper (Calculated according to our criteria. The capacity you achieve may be different.)

**NORITSU**  
PRECISION

QSS Green<sup>IV</sup>

More options, more business




PhotoXport

Interchange Business Park,  
Unit 41, 16 Coal Cart Road, Birstall, Leicester, LE4 3BY, United Kingdom  
Tel: +44 (0) 116 267 5907  
Email: photoxport@btconnect.com  
www.photoxport.com

QSS & AccuSmart<sup>™</sup> are trademarks of Noritsu Precision Co., Ltd.

All other product and company names herein may be trademarks of their respective owners.

The specifications, information, and appearance of the machine herein are subject to change without notice.

 Our products have been manufactured under an ISO 9001-certified quality assurance system.

AccuSmart<sup>™</sup>

# Enhanced value

With QSS Green IV's wide variety of print services, you can provide new ways for customers to enjoy their photos.

## Print Size Advantage

### Enlargements / Panoramas

QSS Green IV can make enlargements in sizes of 305 x 254 mm (12" x 10"), 305 x 457 mm (12" x 18"), and many other sizes, including panorama prints all the way up to 305 x 1,757.7 mm (12" x 69.2"). This enables you to provide personalized photo products such as poster prints, locker prints, and just about any custom print size you can think of.

**Enlargement print** 305 x 457 mm (12" x 18")



### Maximum print size

Roll Paper

**305 x 1,757.7 mm**  
(12" x 69.2")



**Panorama print**



Maximum paper advance length

**1,757.7 mm (69.2")**

## High Performance

### High speed printing keeps work flowing

Print speed is the key to maintaining smooth and steady profits. QSS Green IV enables you to quickly fulfill urgent orders of any size without sacrificing its top-level print quality.

6" x 4" (152 x 102 mm) approx. **670** prints/hour

10" x 8" (254 x 203 mm) approx. **285** prints/hour

12" x 10" (305 x 254 mm) approx. **210** prints/hour

\* When outputting at 720 dpi

## Compact size

### Use less space to sell more with this compact minilab

QSS Green IV has a space-saving design that makes it easy to install anywhere. Maximum sales from minimum floor space. That's what QSS Green IV is about.

Footprint **0.46m<sup>2</sup>** (4.95 sq.feet)



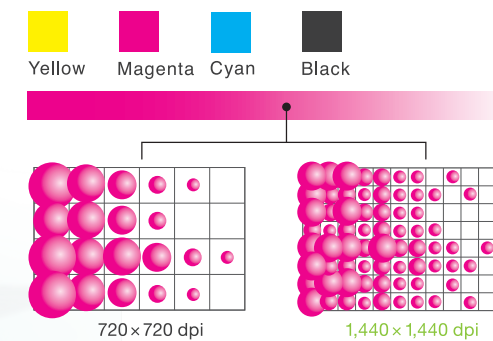
# Enhanced quality

Using the technology Noritsu has developed over the years as a leader in silver halide printing, QSS Green IV delivers a level of quality that exceeds all expectations.

## High quality & High resolution

### Beautiful, sharp prints with multiple dot gradation dye ink system

QSS Green IV uses a high-grade dye ink system that accurately portrays fine details due to its multiple dot gradation technology. The high quality ink, combined with the excellent absorbing quality of the paper, enables QSS Green IV to produce outstanding print quality.



## Two profiles to choose from

There are two profiles available as a standard feature of QSS Green IV - A profile to emulate traditional printing (AgX) and a full color inkjet (IJ) gamut profile that explodes with colors well beyond the traditional look. The profile can be easily changed anytime to meet individual needs.



AgX Profile

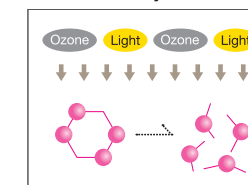


IJ Profile

## High grade ink produces long lasting colors

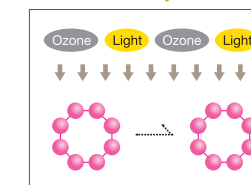
Prints made with conventional dye ink tend to fade quickly. However, the ink used in QSS Green IV enables prints to withstand light and ozone. This is why QSS Green IV prints boast excellent lightfastness and long lasting colors.

Molecular structure of conventional dye ink



Molecular structure is fairly weak resulting in deterioration and fading.

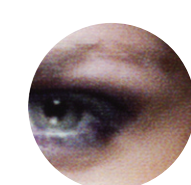
Molecular structure of QSS Green IV dye ink



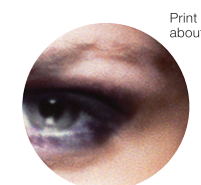
Molecular structures is strong and withstands decomposition. Your prints will be enjoyed for generations.

## QSS Green IV can make impressive 1,440 x 1,440 dpi high-resolution prints

1,440 x 1,440 dpi high resolution prints are less grainy and have smoother gradations than standard prints. This improves the portrayal of contrast, texture and depth.



720 x 720 dpi



1,440 x 1,440 dpi

Print magnification about 5 mm

Different resolutions (the standard 720 dpi or the high resolution 1,440 dpi) can be registered in different print channels in EZ Controller. This enables you to easily change the resolution by simply changing print channels.

## RAW file printing

### High quality prints from RAW image files



Adobe's DNG conversion technology is incorporated in EZ Controller software along with Noritsu's AccuSmart image processing technology. This means you can easily make high quality prints from RAW image files without using separate RAW file conversion software.

JPEG data



A large portion of the pixel data in the original JPEG image has highlight areas that are too light. When the image is corrected, the overall light in the image is reduced, but the pixels representing the highlight areas that were too light are unsalvageable.

RAW data



All gradations are used, producing an image that is well balanced. There are very few pixels with shadows that are too dark and highlights that are too light.

## Optimize the image with EZ Controller

**EZ Controller** (Sold separately)

In addition to serving the important role of system operation software, EZ Controller has a wealth of advanced image correction functions to correct sharpness, contrast, noise, backlight, red-eye, and under/over exposure, and more.



**Paper Advantage**

**A wide variety of photo products**

With more paper types and products to choose from, QSS Green IV increases the range of value-added products you can offer.

**Pearlescent paper prints**



Classy-look with glittering paper

**Square prints**



102 x 102 mm (4" x 4")

**Collage prints**



**Calendar prints**



**Panorama Collage prints**



**Roll Paper**

**A wide variety of print sizes**

QSS Green IV supports all of the print sizes you need. Roll paper widths of 89 mm (3.5") to 305 mm (12") are easily loaded in the printer.



Easy roll paper replacement

**Economical / Eco-Friendly**

**Easy to use, easy on your wallet, and easy on the environment**

There are no photofinishing chemicals involved with dry systems. This brings a reduction in time and costs as you no longer have to be concerned about maintaining specific chemical temperatures and conditions as well as the handling and disposing of chemical solutions.



Easy ink cartridge replacement

**OPTION**

**Paper magazine**

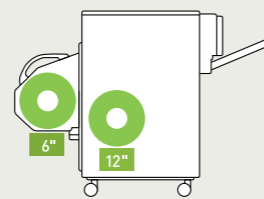
**Paper magazine system automatically switches the paper roll**

With the optional paper magazine, you can load up to 2 paper rolls including the inner paper roll. If you set the same width paper at this optional magazine, QSS Green IV increases efficiency without replacing the paper.



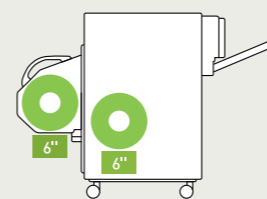
Roll paper of widths 102 mm (4") to 254 mm (10") can be loaded.

**Example 1**



Paper rolls with different paper widths

**Example 2**



Paper rolls with different paper surfaces

# Enhanced business

With its high capacity and labor-saving features, QSS Green IV has what photo retailers need.

**OPTION**

**Print sorter unit**

**The print sorter unit automatically sorts a wide variety of orders**

This print sorter unit improves the work efficiency.



**Print tray for enlargements**

The tray accepts up to 10 enlargements of widths 305 mm (12") x lengths 305 mm (12").

**Print sorter unit**

The sorter accepts prints up to widths 152 mm (6") x lengths 203 mm (8").

Orders

8 orders

Maximum no. of prints

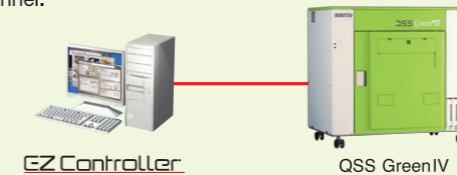
50 prints / tray

## Versatile network

Whether you are running a small independent shop or a large shop, you can choose a network that meets your needs

**Independent shops**

EZ Controller used to manage everything from order input to printing. Suitable for shops with limited personnel.



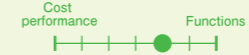
**Studios (in-house processing)**

For a smooth workflow from taking the picture to applying corrections to printing.



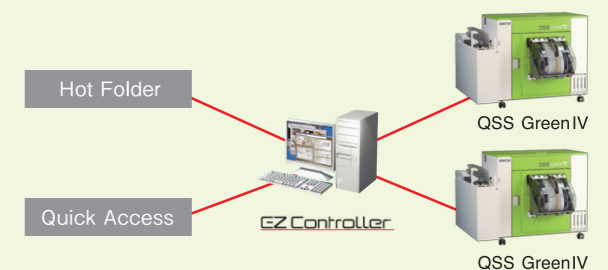
**Independent shops / Chain stores**

The order taking process is easy, which does wonders to enhance efficiency.



**Large-scale shops / Labs**

Can process large volumes with a scalable network system.



\*The network diagrams shown above are examples of how this product can be connected and used. They are not intended to show all details involved each connection.

## Enhanced value

With QSS Green IV's wide variety of print services, you can provide new ways for customers to enjoy their photos.

### Print Size Advantage

#### Enlargements / Panoramas

QSS Green IV can make enlargements in sizes of 305 x 254 mm (12" x 10"), 305 x 457 mm (12" x 18"), and many other sizes, including panorama prints all the way up to 305 x 1,757.7 mm (12" x 69.2"). This enables you to provide personalized photo products such as poster prints, locker prints, and just about any custom print size you can think of.

Enlargement print 305 x 457 mm (12" x 18")



#### Maximum print size

Roll Paper

**305 x 1,757.7 mm**  
(12" x 69.2")



### Panorama print



Maximum paper advance length

**1,757.7 mm (69.2")**

### High Performance

#### High speed printing keeps work flowing

Print speed is the key to maintaining smooth and steady profits. QSS Green IV enables you to quickly fulfill urgent orders of any size without sacrificing its top-level print quality.

6" x 4" (152 x 102 mm)	approx. <b>670</b> prints/hour
10" x 8" (254 x 203 mm)	approx. <b>285</b> prints/hour
12" x 10" (305 x 254 mm)	approx. <b>210</b> prints/hour

\* When outputting at 720 dpi

### Compact size

#### Use less space to sell more with this compact minilab

QSS Green IV has a space-saving design that makes it easy to install anywhere. Maximum sales from minimum floor space. That's what QSS Green IV is about.

Footprint **0.46m<sup>2</sup>** (4.95 sq.feet)

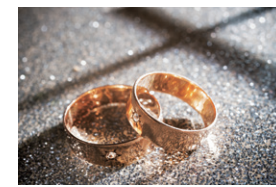


### Paper Advantage

#### A wide variety of photo products

With more paper types and products to choose from, QSS Green IV increases the range of value-added products you can offer.

#### Pearlescent paper prints



Classy-look with glittering paper

#### Square prints



102 x 102 mm (4" x 4")

#### Collage prints



#### Calendar prints



#### Panorama Collage prints



### Roll Paper

#### A wide variety of print sizes you need

QSS Green IV supports all of the print sizes you need. Roll paper widths of 89 mm (3.5") to 305 mm (12") are easily loaded in the printer.



Easy roll paper replacement

### Economical / Eco-Friendly

#### Easy to use, easy on your wallet, and easy on the environment

There are no photofinishing chemicals involved with dry systems. This brings a reduction in time and costs as you no longer have to be concerned about maintaining specific chemical temperatures and conditions as well as the handling and disposing of chemical solutions.



Easy ink cartridge replacement

### OPTION

#### Paper magazine

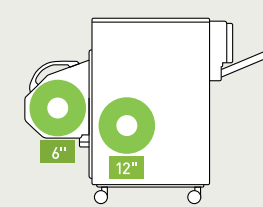
#### Paper magazine system automatically switches the paper roll

With the optional paper magazine, you can load up to 2 paper rolls including the inner paper roll. If you set the same width paper at this optional magazine, QSS Green IV increases efficiency without replacing the paper.



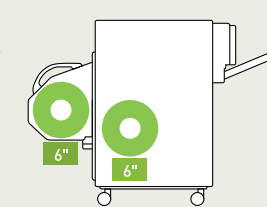
Roll paper of widths 102 mm (4") to 254 mm (10") can be loaded.

#### Example 1



Paper rolls with different paper widths

#### Example 2



Paper rolls with different paper surfaces

## Enhanced business

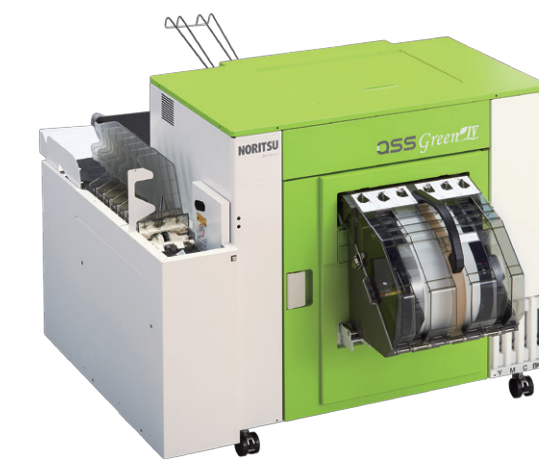
With its high capacity and labor-saving features, QSS Green IV has what photo retailers need.

### OPTION

#### Print sorter unit

#### The print sorter unit automatically sorts a wide variety of orders

This print sorter unit improves the work efficiency.



#### Print tray for enlargements

The tray accepts up to 10 enlargements of widths 305 mm (12") x lengths 305 mm (12").

#### Print sorter unit

The sorter accepts prints up to widths 152 mm (6") x lengths 203 mm (8").

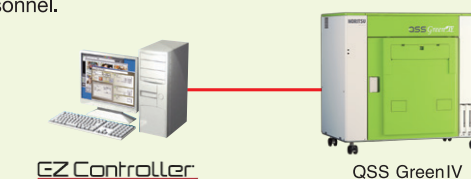
Orders	Maximum no. of prints
8 orders	50 prints / tray

## Versatile network

Whether you are running a small independent shop or a large shop, you can choose a network that meets your needs

### Independent shops

EZ Controller used to manage everything from order input to printing. Suitable for shops with limited personnel.



### Studios (in-house processing)

For a smooth workflow from taking the picture to applying corrections to printing.



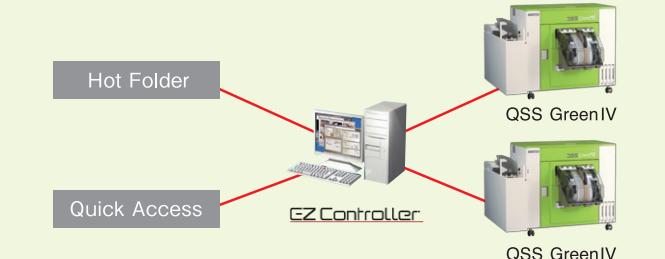
### Independent shops / Chain stores

The order taking process is easy, which does wonders to enhance efficiency.



### Large-scale shops / Labs

Can process large volumes with a scalable network system.



\*The network diagrams shown above are examples of how this product can be connected and used. They are not intended to show all details involved each connection.